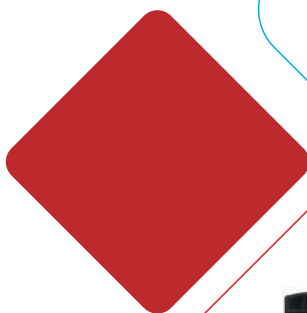


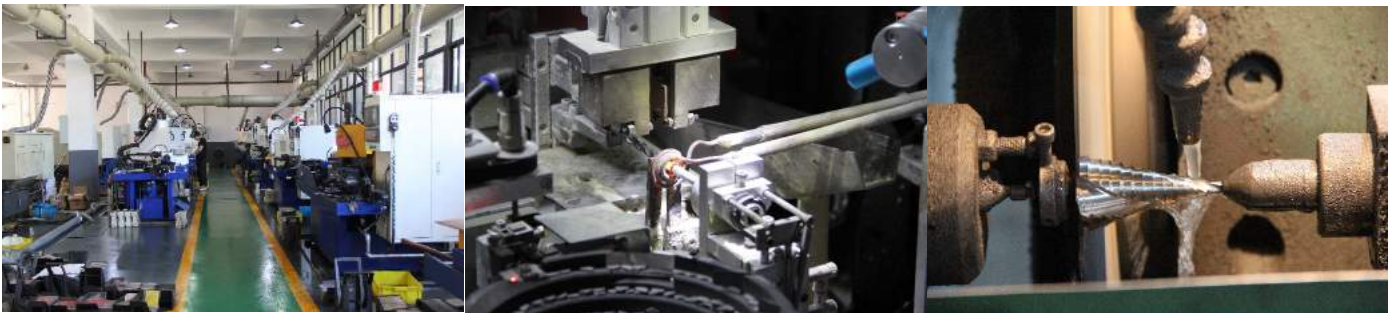
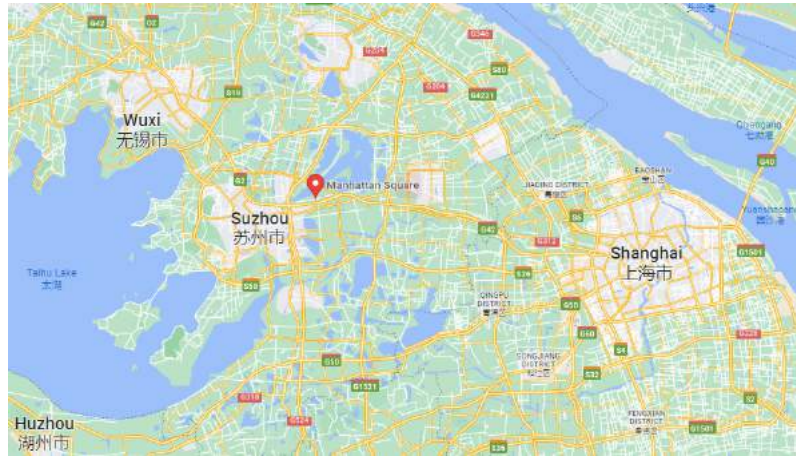
PRODUCT CATALOGUE 2023



Company Profile

Our company is located in Suzhou, with excellent geographical location and convenient traffic. It takes only half an hour to Shanghai port, which is the biggest port in China.

We are the professional manufacturer of hardware tool accessories, specialized in drill bits, hole saw, cutting discs and various tool sets. Besides, we also supply different kinds of hand tools, include measuring tapes, caulking guns, cable ties, etc.



We have our specialized techniques, advanced production machines and a professional sales team.

We can take the full responsibility for the whole process, including design, manufacture, package and after-sales service. We also provide OEM, accept customize according to client's request.



BSCI



EU



CE



ROHS



CE



Jane Zhou

General Manager

Jane founded GOLDMOON in 2010 and served as a chief Executive Officer/Director with overall responsibility for strategic development and execution of the company.

After graduating from university, Jane has been engaged in the hardware industry for 20 years and has single-handedly established the GOLDMOON and BeHappy brand. And she's building her own industrial park.

Jane has accumulated mature experience in market expansion and new product development. Under her leadership, GOLDMOON has successfully cooperated with a number of world famous hardware tool vendors, making GOLDMOON one of the most popular suppliers for importers in the hardware industry.



Symbols and Icons



Carbon Steel



Bi-metal material



High Speed Steel



Diamond Hole Saw



Tungsten Carbide Tipped



Alloy material



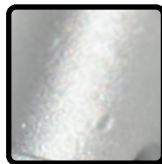
spray lacquer



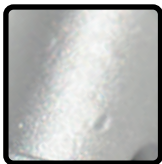
spraying plastics



electroplate



abrasive blasting



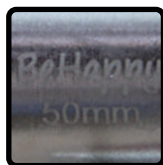
black finish



Silkscreen



Stamping



Plating etch



Used for hole saw of 14-30mm



Used for hole saw of over 30 mm

Carbon Steel Hole Saw

Application For

Wood
Plastic



Code	D/mm	D/Inch	Depth
GM-HS-1001	19	3/4	38/47
GM-HS-1002	22	7/8	38/47
GM-HS-1003	25	1	38/47
GM-HS-1004	28	1-3/32	38/47
GM-HS-1005	29	1-1/8	38/47
GM-HS-1006	30	1-3/16	38/47
GM-HS-1007	32	1-1/4	38/47
GM-HS-1008	35	1-3/8	38/47
GM-HS-1009	38	1-1/2	38/47
GM-HS-1010	39	1-17/32	38/47
GM-HS-1011	41	1-5/8	38/47
GM-HS-1012	44	1-3/4	38/47
GM-HS-1013	48	1-7/8	38/47
GM-HS-1014	51	2	38/47
GM-HS-1015	54	2-1/8	38/47



Code	D/mm	D/Inch	Depth
GM-HS-1016	57	2-1/4	38/47
GM-HS-1017	60	2-3/8	38/47
GM-HS-1018	64	2-1/2	38/47
GM-HS-1019	67	2-5/8	38/47
GM-HS-1020	70	2-3/4	38/47
GM-HS-1021	73	2-7/8	38/47
GM-HS-1022	76	3	38/47
GM-HS-1023	79	3-1/8	38/47
GM-HS-1024	83	3-1/4	38/47
GM-HS-1025	88	3-1/2	38/47
GM-HS-1026	89	3-1/2	38/47
GM-HS-1027	95	3-3/4	38/47
GM-HS-1028	102	4	38/47
GM-HS-1029	127	5	38/47
GM-HS-1030	152	6	38/47

Bi-Metal Hole Saw

Application For

*Metal
Wood
Plastic*



Code	D/mm	D/Inch	Depth
GM-HS-2001	13	1/2	38/47
GM-HS-2002	14	9/16	38/47
GM-HS-2003	15	19/32	38/47
GM-HS-2004	16	5/8	38/47
GM-HS-2005	17	11/16	38/47
GM-HS-2006	18	11/16	38/47
GM-HS-2007	19	3/4	38/47
GM-HS-2008	20	25/32	38/47
GM-HS-2009	21	13/16	38/47
GM-HS-2010	22	7/8	38/47
GM-HS-2011	23	29/32	38/47
GM-HS-2012	24	15/16	38/47
GM-HS-2013	25	1	38/47
GM-HS-2014	26	1-1/32	38/47
...



Code	D/mm	D/Inch	Depth
GM-HS-2100	172	6-49/64	38/47
GM-HS-2101	175	6-59/64	38/47
GM-HS-2102	176	6-31/32	38/47
GM-HS-2103	177	7	38/47
GM-HS-2104	178	7-3/32	38/47
GM-HS-2105	180	7-9/32	38/47
GM-HS-2106	185	7-13/32	38/47
GM-HS-2107	188	7-31/64	38/47
GM-HS-2108	190	7-7/8	38/47
GM-HS-2109	200	8-17/64	38/47
GM-HS-2110	210	8-15/32	38/47
GM-HS-2111	215	8-15/32	38/47
GM-HS-2112	220	8-21/32	38/47
GM-HS-2113	225	8-55/64	38/47
GM-HS-2114	230	9-1/6	38/47

Arbor For Hole Saw

Code	Shank Dia/mm	Thread/Inch	Chunk Size/Inch	Fits Size/Inch
GM-HS-3001	1/4 Round	1/2--20 UNF	1/4	9/16--1-3/16
GM-HS-3002	3/8 Hex	1/2--20 UNF	3/8	9/16--1-3/16
GM-HS-3003	7/16 Hex	1/2--20 UNF	1/2	9/16--1-3/16
GM-HS-3004	7/16 Hex	5/8--18 UNF	1/2	1-1/4--8-17/64
GM-HS-3005	3/8 Hex	5/8--18 UNF	3/8	1-1/4--8-17/64
GM-HS-3006	5/8 Hex	5/8--18 UNF	3/4	1-1/4--8-17/64
GM-HS-3007	SDS Plus	1/2--20 UNF	SDS	9/16--1-3/16
GM-HS-3008	SDS Plus	5/8--18 UNF	SDS	1-1/4--8-17/64
GM-HS-3009	SDS Plus	5/8--18 UNF	SDS	1-1/4--7-7/8
...



HSS Hole Saw



Code	D/mm	Code	D/mm	Code	D/mm
GM-HS-4001	12	GM-HS-4015	27	GM-HS-4029	52
GM-HS-4002	13	GM-HS-4016	28	GM-HS-4030	45
GM-HS-4003	14	GM-HS-4017	29	GM-HS-4031	50
GM-HS-4004	15	GM-HS-4018	30	GM-HS-4032	55
GM-HS-4005	16	GM-HS-4019	31	GM-HS-4033	60
GM-HS-4006	18	GM-HS-4020	32	GM-HS-4034	65
GM-HS-4007	19	GM-HS-4021	33	GM-HS-4035	70
GM-HS-4008	20	GM-HS-4022	34	GM-HS-4036	75
GM-HS-4009	21	GM-HS-4023	35	GM-HS-4037	80
GM-HS-4010	22	GM-HS-4024	37	GM-HS-4038	85
GM-HS-4011	23	GM-HS-4025	38	GM-HS-4039	90
GM-HS-4012	24	GM-HS-4026	39	GM-HS-4040	95
GM-HS-4013	25	GM-HS-4027	40	GM-HS-4041	100
GM-HS-4014	26	GM-HS-4028	41		



TCT Hole Saw



Code	D/mm	D/Inch	Code	D/mm	D/Inch
GM-HS-5001	19	3/4	GM-HS-5017	67	2-5/8
GM-HS-5002	22	7/8	GM-HS-5018	70	2-3/4
GM-HS-5003	25	1	GM-HS-5019	73	2-7/8
GM-HS-5004	28	1-3/32	GM-HS-5020	74	2-58/64
GM-HS-5005	32	1-1/4	GM-HS-5021	76	3
GM-HS-5006	35	1-3/8	GM-HS-5022	79	3-1/8
GM-HS-5007	38	1-1/2	GM-HS-5023	83	3-1/4
GM-HS-5008	40	1-9/16	GM-HS-5024	92	3-5/8
GM-HS-5009	41	1-5/8	GM-HS-5025	95	3-3/4
GM-HS-5010	44	1-3/4	GM-HS-5026	102	4
GM-HS-5011	48	1-7/8	GM-HS-5027	103	4-1/32
GM-HS-5012	51	2	GM-HS-5028	114	4-1/2
GM-HS-5013	54	2-1/8	GM-HS-5029	127	5
GM-HS-5014	57	2-1/4	GM-HS-5030	140	5-1/2
GM-HS-5015	60	2-3/8	GM-HS-5031	152	6
GM-HS-5016	64	2-1/2			



Diamond Hole Saw

Code	D/mm	D/Inch	Code	D/mm	D/Inch
GM-HS-6001	13	1/2	GM-HS-6027	39	1-17/32
GM-HS-6002	14	9/16	GM-HS-6028	40	1-9/16
GM-HS-6003	15	19/32	GM-HS-6029	41	1-5/8
GM-HS-6004	16	5/8	GM-HS-6030	42	1-21/32
GM-HS-6005	17	11/16	GM-HS-6031	43	1-11/16
GM-HS-6006	18	11/16	GM-HS-6032	44	1-3/4
GM-HS-6007	19	3/4	GM-HS-6033	45	1-49/64
GM-HS-6008	20	25/32	GM-HS-6034	46	1-13/16
GM-HS-6009	21	13/16	GM-HS-6035	47	1-27/32
GM-HS-6010	22	7/8	GM-HS-6036	48	1-7/8
GM-HS-6011	23	29/32	GM-HS-6037	49	1-15/16
GM-HS-6012	24	15/16	GM-HS-6038	50	1-31/32
GM-HS-6013	25	1	GM-HS-6039	51	2
GM-HS-6014	26	1-1/32	GM-HS-6040	52	2-1/16
GM-HS-6015	27	1-1/16	GM-HS-6041	53	2-3/32
GM-HS-6016	28	1-3/32	GM-HS-6042	54	2-1/8
GM-HS-6017	29	1-1/8	GM-HS-6043	55	2-11/64
GM-HS-6018	30	1-3/16	GM-HS-6044	56	2-13/64
GM-HS-6019	31	1-7/32	GM-HS-6045	57	2-1/4
GM-HS-6020	32	1-1/4	GM-HS-6046	58	2-9/32
GM-HS-6021	33	1-5/16	GM-HS-6047	59	2-5/16
GM-HS-6022	34	1-11/32	GM-HS-6048	60	2-3/8
GM-HS-6023	35	1-3/8	GM-HS-6049	61	2-13/32
GM-HS-6024	36	1-27/64	GM-HS-6050	62	2-7/16
GM-HS-6025	37	1-7/16	GM-HS-6051	63	2-31/64
GM-HS-6026	38	1-1/2



Thickened Diamond-Coated Surface Provides High-Strength and Precise Cutting



1mm Wall Thickness Provides Better Durability

Alloy Hole Saw for Concrete

Alloy



Code	D/mm	Oal/mm
GM-HS-7001	30.0	72
GM-HS-7002	32.0	72
GM-HS-7003	35.0	72
GM-HS-7004	40.0	72
GM-HS-7005	45.0	72
GM-HS-7006	50.0	72
GM-HS-7007	55.0	72
GM-HS-7008	60.0	72
GM-HS-7009	65.0	72
GM-HS-7010	70.0	72
GM-HS-7011	75.0	72
GM-HS-7012	80.0	72
GM-HS-7013	90.0	72
GM-HS-7014	100.0	72
GM-HS-7015	105.0	72
GM-HS-7016	110.0	72
GM-HS-7017	120.0	72
...





9PCS Hole Saw Set

Arbor 3/8"
Arbor 7/16"
Adapter
Pilot drill 6*35mm
Bi-metal hole saw
7/8"(22mm) 1-1/8"(29mm)
1-1/2"(38mm) 1-3/4"(44mm)
2-5/8"(67mm) 2-7/8"(73mm)



7PCS Hole Saw Set

Arbor 7/16"
Adapter
Pilot drill 6*35mm
Bi-metal hole saw
1-1/8"(29mm) 1-1/2"(38mm)
1-3/4"(44mm) 2-5/8"(67mm)
2-7/8"(73mm)



9PCS Hole Saw Set

Arbor 3/8"
Arbor 7/16"
Adapter
Pilot drill 6*35mm
Bi-metal hole saw
7/8"(22mm) 1-1/8"(29mm)
1-1/2"(38mm) 1-3/4"(44mm)
2-5/8"(67mm) 2-7/8"(73mm)



9PCS Hole Saw Set

Arbor 3/8"
 Arbor 7/16"
 Adapter
 Pilot drill 6*35mm
 Bi-metal hole saw
 3/4"(19mm) 7/8"(22mm)
 1-1/8"(29mm) 1-1/2"(38mm)
 1-3/4"(44mm) 2-1/4"(57mm)



9PCS Hole Saw Set

Arbor 3/8"
 Arbor 7/16"
 Adapter
 Pilot drill 6*35mm
 Bi-metal hole saw
 7/8"(22mm) 1-1/8"(29mm)
 1-3/8"(35mm) 1-3/4"(44mm),
 2"(51mm) 2-1/2"(64mm)



14PCS Hole Saw Set

Arbor 3/8"
 Arbor 7/16"
 Adapter
 Pilot drill 6*35mm
 Bi-metal hole saw
 3/4"(19mm), 7/8"(22mm), 1-1/8"(29mm),
 1-3/8"(35mm), 1-1/2"(38mm),
 1-3/4"(44mm), 2"(51mm),
 2-1/4"(57mm), 2-1/2"(64mm)



13PCS Hole Saw Set

Arbor 3/8"
Arbor 7/16"
Adapter
Pilot drill 6*35mm
Bi-metal hole saw
3/4"(19mm), 7/8"(22mm), 1-1/8"(29mm),
1-3/8"(35mm), 1-1/2"(38mm),
1-3/4"(44mm), 2"(51mm), 2-1/4"(57mm),
2-1/2"(64mm)



16PCS Hole Saw Set

Arbor 3/8"
Arbor 7/16"
Long Extension
Pilot drill 6*35mm
Bi-metal hole saw
3/4"(19mm), 7/8"(22mm), 1"(25mm),
1-1/8"(29mm), 1-3/8"(35mm), 1-1/2"(38mm)
1-3/4"(44mm), 2"(51mm), 2-1/4"(57mm),
2-1/2"(64mm), 3"(76mm)



9PCS Hole Saw Set

Arbor 3/8"
Arbor 7/16"
Adapter
Pilot drill 6*35mm
Bi-metal hole saw
3/4"(19mm), 7/8"(22mm), 1-1/8"(29mm),
1-1/2"(38mm), 1-3/4"(44mm), 2-1/4"(57mm)



13PCS Hole Saw Set

Arbor 3/8"
Arbor 7/16"
Adapter
Pilot drill 6*35mm
Bi-metal hole saw
3/4"(19mm), 7/8"(22mm), 1-1/8"(29mm),
1-3/8"(35mm), 1-1/2"(38mm),
1-3/4"(44mm), 2"(51mm), 2-1/4"(57mm),
2-1/2"(64mm)



17PCS Hole Saw Set

Arbor 3/8"
Arbor 7/16"
Pilot drill 6*35mm
Bi-metal hole saw
3/4"(19mm), 7/8"(22mm), 1-1/8"(29mm),
1-3/8"(35mm), 1-1/2"(38mm), 1-3/4"(44mm),
2"(51mm), 2-1/4"(57mm), 2-1/2"(64mm)



7PCS Hole Saw Set

Arbor 3/8"
Adaptor
Pilot drill 6*35mm
Bi-metal hole saw
7/8"(22mm), 1"(25mm), 1-1/8"(29mm),
1-1/4"(32mm), 1-1/2"(38mm)



14PCS Hole Saw Set

Arbor 3/8"
Arbor 7/16"
Long Extension
Pilot drill 6*35mm
Bi-metal hole saw
3/4"(19mm), 7/8"(22mm), 1"(25mm),
1-1/8"(29mm), 1-3/8"(35mm), 1-1/2"(38mm);
1-3/4"(44mm), 2"(51mm), 2-1/4"(57mm),
2-1/2"(64mm), 3"(76mm)



13PCS Hole Saw Set

Arbor 3/8"
Arbor 7/16"
Pilot drill 6*35mm
Bi-metal hole saw
7/8"(22mm), 1-1/8"(29mm), 1-3/8"(35mm),
1-3/4"(44mm), 2-13/64(56mm) , 2-1/2"(64mm),
2-63/64"(75 mm), 3-5/8"(92mm),
4-3/8"(111mm), 5"(127mm)



13PCS Hole Saw Set

Arbor 3/8"
Arbor 7/16"
Long Extension
Pilot drill 6*35mm
Bi-metal hole saw
7/8"(22mm), 1-1/8"(29mm), 1-3/8"(35mm),
1-3/4"(44mm), 2-13/64(56mm) , 2-1/2"(64mm),
2-63/64"(75 mm), 3-5/8"(92mm),
4-3/8"(111mm), 5"(127mm)



Carbide Particle Hole Saw Set

Arbor 3/8"
Pilot drill 6*35mm
Concreat hole saw



12PCS Hole Saw Set

Arbor 3/8"
Arbor 7/16"
Hex wrench
Pilot drill 6*35mm
Bi-metal hole saw
3/4"(19mm), 7/8"(22mm), 1-1/8"(29mm),
1-3/8"(35mm), 1-1/2"(38mm), 1-3/4"(44mm),
2"(51mm), 2-1/4"(57mm), 2-1/2"(64mm)



11PCS Hole Saw Set

Arbor 3/8"
Arbor 7/16"
Hex wrench
Pilot drill 6*35mm
Carbon steel hole saw
19/22/29/32/38/44/51/64mm



3PCS Hole Saw Set

Arbor 3/8", M14-1.5MM
Pilot drill 6*35mm
Carbon steel hole saw
2-1/8"(54mm)
Wood flat drill bit-7/8"



5PCS Hole Saw Set

Arbor 7/16"
Pilot drill 6*35mm
Carbon steel hole saw
1-1/2"(38mm)
1-1/4"(32mm)
2-1/8"(54mm)
2"(51mm)



Diamond Saw Blade-Dry

Cold pressing
Dry type
105mm-300mm
Double blister



Diamond Saw Blade-Wet

Cold pressing
Wet type
105mm-300mm
Double blister



Diamond Saw Blade-Turbo

Heat pressing
Turbo
105mm-300mm
Double blister



TCT Multifunction Saw Blade

For metal/plastic/wood/aluminum
1-2pcs/color box
216mm*30mm*60T



Company Web
Behappy



Amazon
Behappy



Alibaba
Behappy

BEHAPPY CRAFTS(SUZHOU) CO.,LTD

Room 803, No. 3 Building,
Manhattan Square,
Industrial Park,
Suzhou,CHINA ,215122

Email: behappy@behappycrafts.com
WhatsApp/WeChat/Mob: + 86 15370360250
Tel/Fax: 0512-6885 2679
www.behappycrafts.com